

job name:
 type:

18"/24" 2TR™ spec sheet 90CRI

material

trim ring
 3" h roll formed aluminum extrusion. 6061 T1 alloy. .100 typ. wall. available in 15 standard powder coat paint finishes listed below. premium RAL and wood finishes also available. satin black canopy and cord standard on wood finishes.

reflector
 internal White Optics film, 97% reflective and highly diffuse, ensures consistent performance across all trim finishes.

LED
 premium architectural grade flexible LED PCB in 3000K, 3500K, or 4000K. (90+ cri standard). under normal operating conditions, the LEDs employed are rated for >50,000hrs L70 (6.8K) per IES TM-21 from LM-80 test data.

driver (remote)
 programmable, UL class P, class2, universal input (120-277v), constant current, 0-10v controllable, 1% minimum dimming level. remote driver enclosure standard. consult factory for distances over 33 feet.

mounting
 5" dia. spun steel canopy painted to match trim is designed to mount to a 4" octagon junction box (by other). satin black canopy standard on wood finishes. 6' tripod suspension of stainless steel cables attaches to reflector with field adjustable grippers that allow for exact AFF mounting heights. slip ring coupler at ceiling allows for easy wire connections. or select 12ft adjustable suspension. (drawing below) satin black canopy and cord standard on wood finishes.


finish
 select from 15 standard powder coat paint finishes listed below. premium RAL and wood finishes also available. satin black canopy and cord standard on wood finishes.

emergency
 recommend use of inverter (by other).



catalog number

--	--	--	--	--	--

size	CCT	lumens	painting finish	power cord	options
P2318.LV 18"dia X 3"ht	30 3000K	LO 1000 lm	AP anodized paint	WHPC white power cord	6FT 72" adj cables
	35 3500K	HI 2000 lm	BS brass	BKPC black power cord	12FT 12ft adj suspension
	40 4000K	CL xxxx lm <small>custom lumens consult factory 1000 - 3000 lm</small>	BU blue	SBPC silver braid power cord	ELD EldoLED*
	RGBW35 TW2765	RGBW 3500K tunable white 2700K - 6500K	CP champagne FB flat black GM gun metal MB military blue MW matte white OR orange RD red SB satin black SS satin silver TG textured gray YO yellow		LUT Lutron* <small>*consult factory</small>
P2324.LV (2ft) 24"dia X 3"ht <small>See p.2 for info on P2336 & P2348</small>	30 3000K	LO 1400 lm	premium finish		
	35 3500K	HI 2800 lm	RAL specify RAL#		
	40 4000K	CL xxxx lm <small>custom lumens consult factory 1400 - 4200 lm</small>	wood finish		
	RGBW35 TW2765	RGBW 3500K tunable white 2700K - 6500K	ASH ashwood ENG english brown oak ESP espresso <small>satin black canopy and cord standard on wood finishes</small>		



job name:
 type:

36"/48" 2TR™ spec sheet 90CRI

material

trim ring

3" h roll formed aluminum extrusion. 6061 T1 alloy. .100 typ. wall. available in 15 standard powder coat paint finishes listed below. premium RAL and wood finishes also available. satin black canopy and cord standard on wood finishes.

reflector

internal White Optics film, 97% reflective and highly diffuse, ensures consistent performance across all trim finishes.

LED

premium architectural grade flexible LED PCB in 3000K, 3500K, or 4000K. (90+ cri standard). under normal operating conditions, the LEDs employed are rated for >50,000hrs L70 (6.8K) per IES TM-21 from LM-80 test data.

driver (remote)

programmable, UL class P, class2, universal input (120-277v), constant current, 0-10v controllable, 1% minimum dimming level. remote driver enclosure standard. consult factory for distances over 33 feet.

mounting

5" dia. spun steel canopy painted to match trim is designed to mount to a 4" octagon junction box (by other). satin black canopy standard on wood finishes. 6' tripod suspension of stainless steel cables attaches to reflector with field adjustable grippers that allow for exact AFF mounting heights. slip ring coupler at ceiling allows for easy wire connections. or select 12ft adjustable suspension. (drawing below) satin black canopy and cord standard on wood finishes.

finish

select from 15 standard powder coat paint finishes listed below. premium RAL and wood finishes also available. satin black canopy and cord standard on wood finishes.

emergency

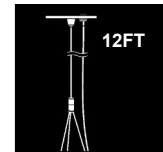
recommend use of inverter (by other).

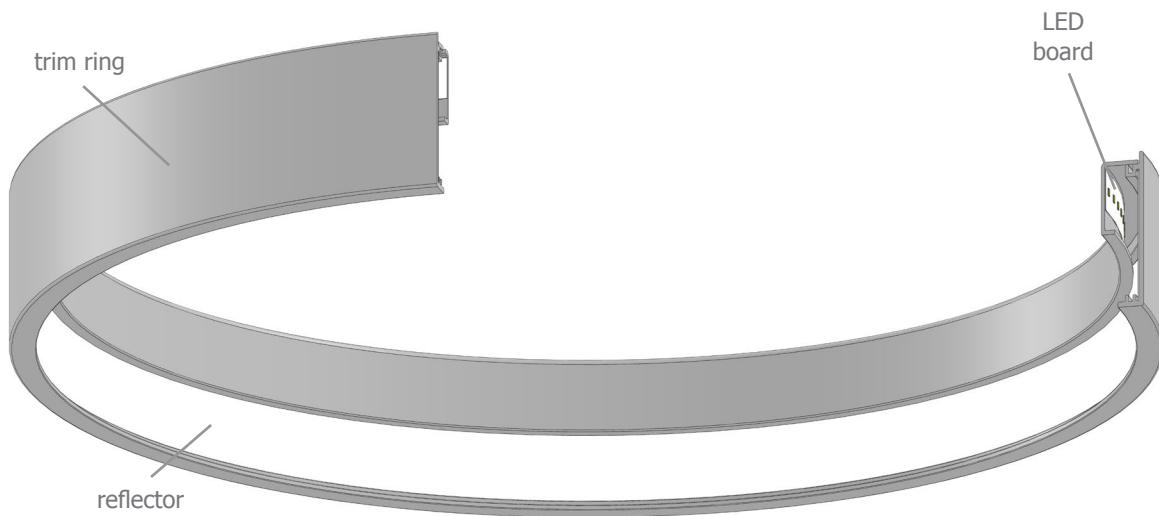
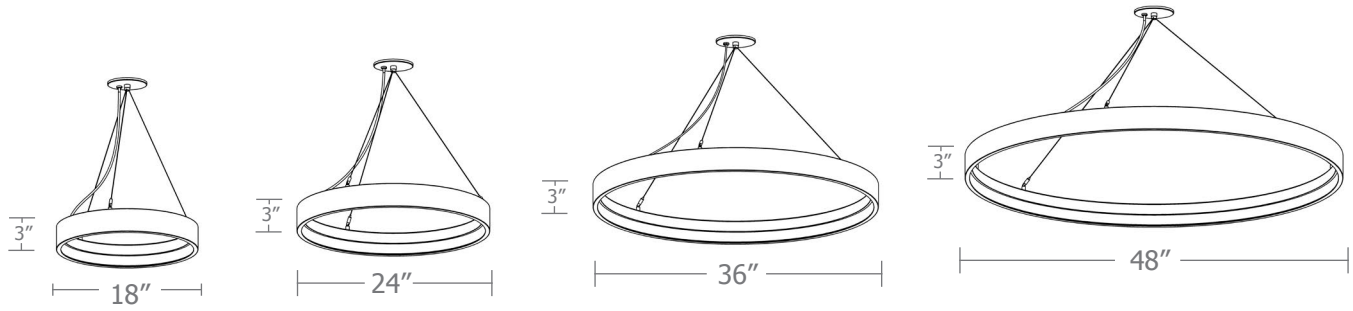


catalog number

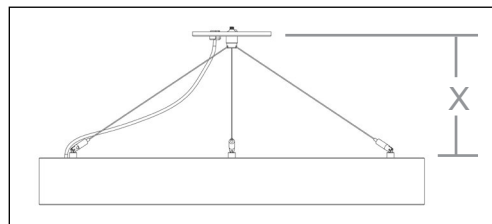
--	--	--	--	--	--

size	CCT	lumens	painting finish	power cord	options
P2336.LV (3ft) 36" dia X 3" ht	30 3000K	LO 2000 lm	AP anodized paint	WHPC white power cord	6FT 72" adj cables
	35 3500K	HI 4000 lm	BS brass	BKPC black power cord	12FT 12ft adj suspension
	40 4000K	CL xxxx lm <small>custom lumens consult factory 2000 - 6000 lm</small>	BU blue	SBPC silver braid power cord	ELD EldoLED*
	RGBW35	RGBW 3500K	BZ bronze		LUT Lutron* <small>*consult factory</small>
	TW2765	tunable white 2700K - 6500K	CP champagne		
P2348.LV (4ft) 48" dia X 3" ht	30 3000K	LO 3000 lm	FB flat black		
	35 3500K	HI 6000 lm	GM gun metal		
	40 4000K	CL xxxx lm <small>custom lumens consult factory 3000 - 9000 lm</small>	MB military blue		
	RGBW35	RGBW 3500K	MW matte white		
	TW2765	tunable white 2700K - 6500K	OR orange	premium finish	
			RAL specify RAL#		
			wood finish		
			ASH ashwood		
			ENG english brown oak		
			ESP espresso <small>satin black canopy and cord standard on wood finishes</small>		





remote driver enclosure



min. suspension length.

	X
P2318	6"
P2324	8"
P2336	12"
P2348	15"

job name:
type:

2πr™ RGBW spec sheet 90CRI

material

trim ring

wafer thin 3" h roll formed aluminum extrusion. 6061 T1 alloy. .100 typ. wall. available in 15 standard powder coat paint finishes listed below. premium RAL and wood finishes also available.

optics

reflector

internal White Optics film, 97% reflective and highly diffuse, ensures consistent performance across all trim finishes.

LED

premium architectural grade flexible LED PCB in 3000K, 3500K, or 4000K. (90+ cri standard). under normal operating conditions, the LEDs employed are rated for >50,000hrs L70 (6.8K) per IES TM-21 from LM-80 test data.

driver (remote)

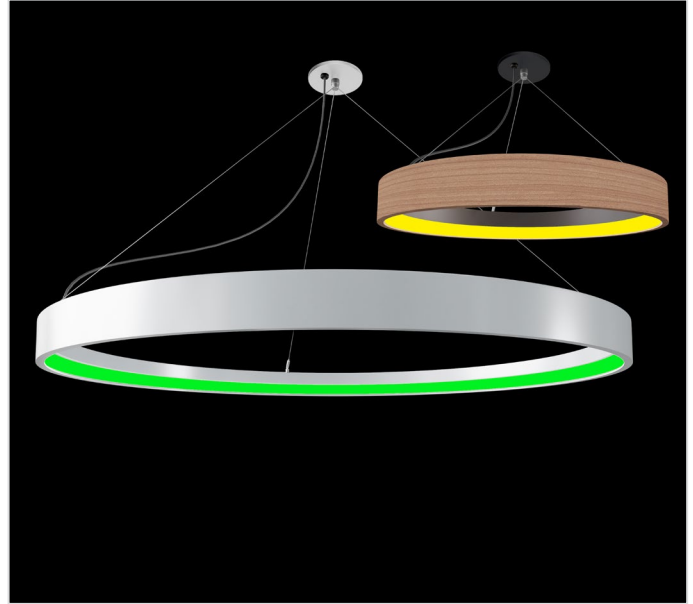
infinite color control, enabling stunning lighting effects with constant voltage LEDs for architectural lighting applications. whether single color for accent, tunable white for circadian applications, or full color RGB for entertainment product solutions, these drivers provide flicker-safe dimming to 1% with DALI or DMX and allows you to create your color or dynamic show without an external controller. additionally, these LED drivers work seamlessly with other controls, and intelligent luminaire elements.

mounting

5" dia. spun steel canopy in satin white is designed to mount to a 4" octagon junction box (by other). 6' tripod suspension of stainless steel cables attaches to reflector with field adjustable grippers that allow for exact AFF mounting heights. slip ring coupler at ceiling allows for easy wire connections. or select 12ft adjustable suspension.

finish

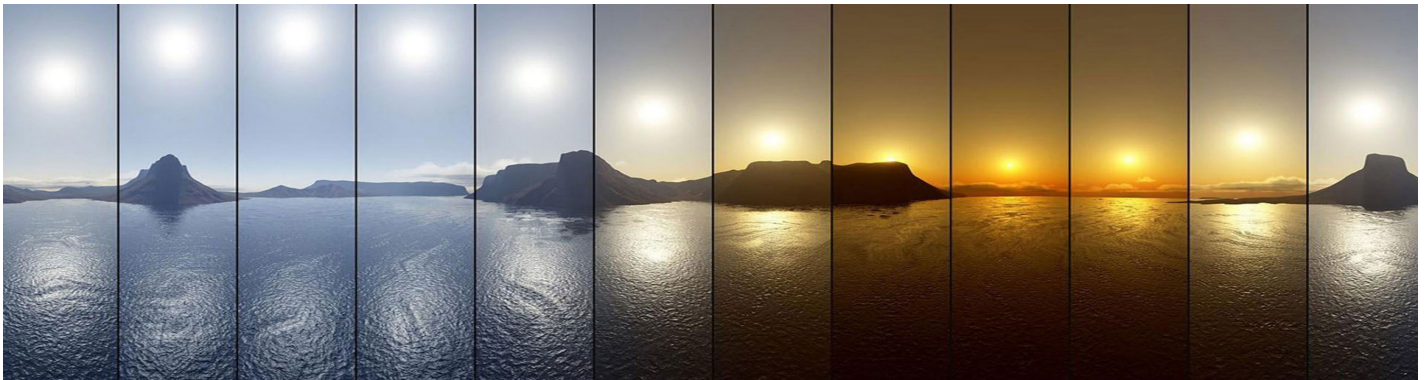
select from 15 standard powder coat paint finishes listed below. premium RAL and wood finishes also available.



2πr™ TW2765™ spec sheet 90CRI

LED

high performance tunable white spec-grade LED modules for excellent circadian lighting effects. from 2700K – 6500K CCT and anywhere in between with beautiful uniform color blending. with 2 channel constant current architecture, this high performance LED module provides the versatility needed to bring color tunable white capability to any architectural application.



made in the
usa!

impactItg 

www.impactItg.com / 314-427-1212 / saint louis, mo

specifications
subject
to change © 2026
rev. 03/25/2026

Calculation Table

The application of a Light Loss Factor is required to:

- match the lumen output for the power module specified
- incorporate the increased lumen output due to LED/Driver upgrades

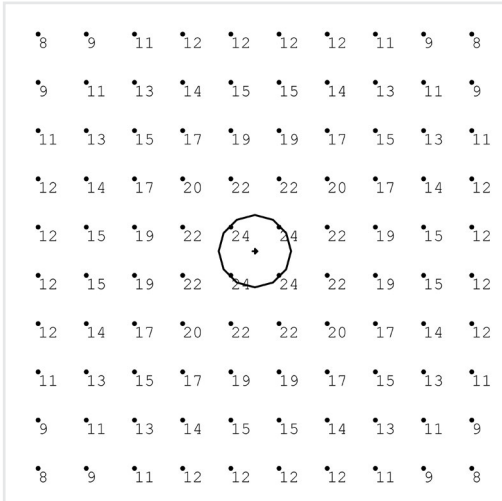
Cat No	Delivered* Lumens	Watts 120V / 277V	IES File #	LLF to be applied
P2318 LO	1000	30	L06251051	.74
P2318 HI	2000	36	L06251051	.85
P2324 LO	1400	43	L06251053	.65
P2324 HI	2000	52	L06251053	.77
P2336 LO	2000	70	L06251054	.60
P2336 HI	4000	90	L06251054	.74
P2348 LO	3000	107	L06251055	.56
P2348 HI	6000	142	L06251055	.72

*preliminary delivered lumens based on 4000K, 90+ cri



Typical Lighting Layout

- 20' x 20' x 18'H space
- 80/50/20 reflectances
- bottom of fixture at 15' aff
- FC readings at 2.5' aff
- layout conducted using HI lumen package (9200 delivered lumens)

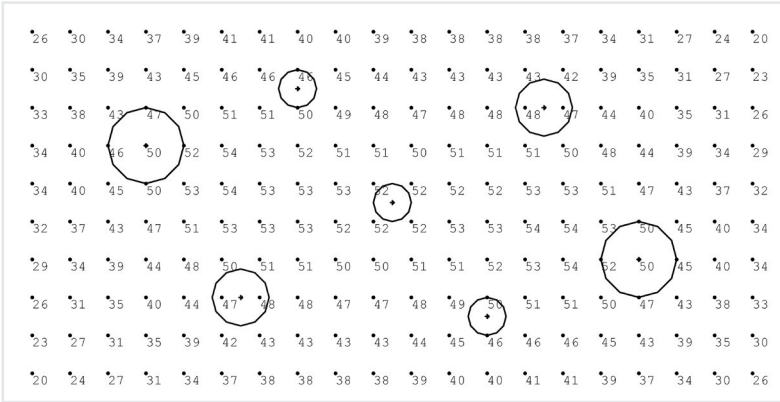


Schedule						
Symbol	Qty	Manufacturer	Test#	Description	LED	LLF
○	1	Impact Architectural Lighting	L062510504 . P5636.40HI . WAF_R_3	P5636.40 HI	4000K.90CRI	0.740

Statistics					
Description	Avg	Max	Min	Max/Min	Avg/Min
waf.r.3 36" diameter	14.64 fc	24 fc	8 fc	3.00	1.83

Typical Lighting Layout

- 40' x 20' x 18'H space
- 80/50/20 reflectances
- bottom of fixture at 15' aff
- FC readings at 2.5' aff
- layout conducted using LO lumen package
 24" - 4100 lm
 36" - 7400 lm
 48" - 11600 lm

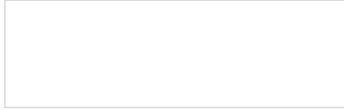


Schedule						
Symbol	Qty	Manufacturer	Test#	Description	LED	LLF
○	2	Impact Architectural Lighting	L062510504 . P5636.40HI . WAF_R_3	P5636.40LO	4000K.90CRI	.60
○	3	Impact Architectural Lighting	L062510503 . P5624.40HI . WAF_R_3	P5624.40LO	4000K.90CRI	.65
○	2	Impact Architectural Lighting	L062510505 . P5648.40HI . WAF_R_3	P5648.40LO	4000K.90CRI	.56

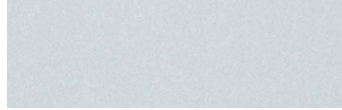
Statistics					
Description	Avg	Max	Min	Max/Min	Avg/Min
waf.r.3 24", 36", & 48" diameters	42.43 fc	54 fc	20 fc	2.70	2.12



Powder Coat Paint Finishes



MW matte white



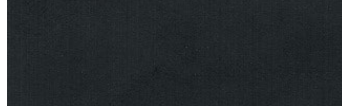
AP anodized paint



SS satin silver



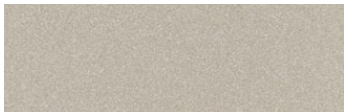
TG textured gray



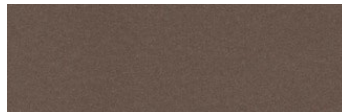
FB flat black



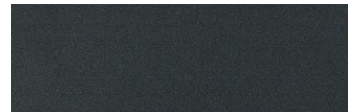
SB satin black



CP champagne



BZ bronze



GM gun metal



OR orange 2011



BU blue 5017



BS brass



RD red 3020



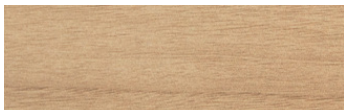
YO yellow 1018



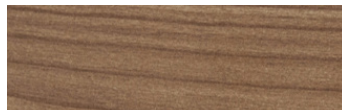
MB military blue

Premium Finishes*

Wood Finishes



ASH ashwood



ENG english brown oak



ESP espresso

For accurate color verification, actual finish samples are available upon request.



RAL#

*Available on select series. Consult product submittal for availability.

